

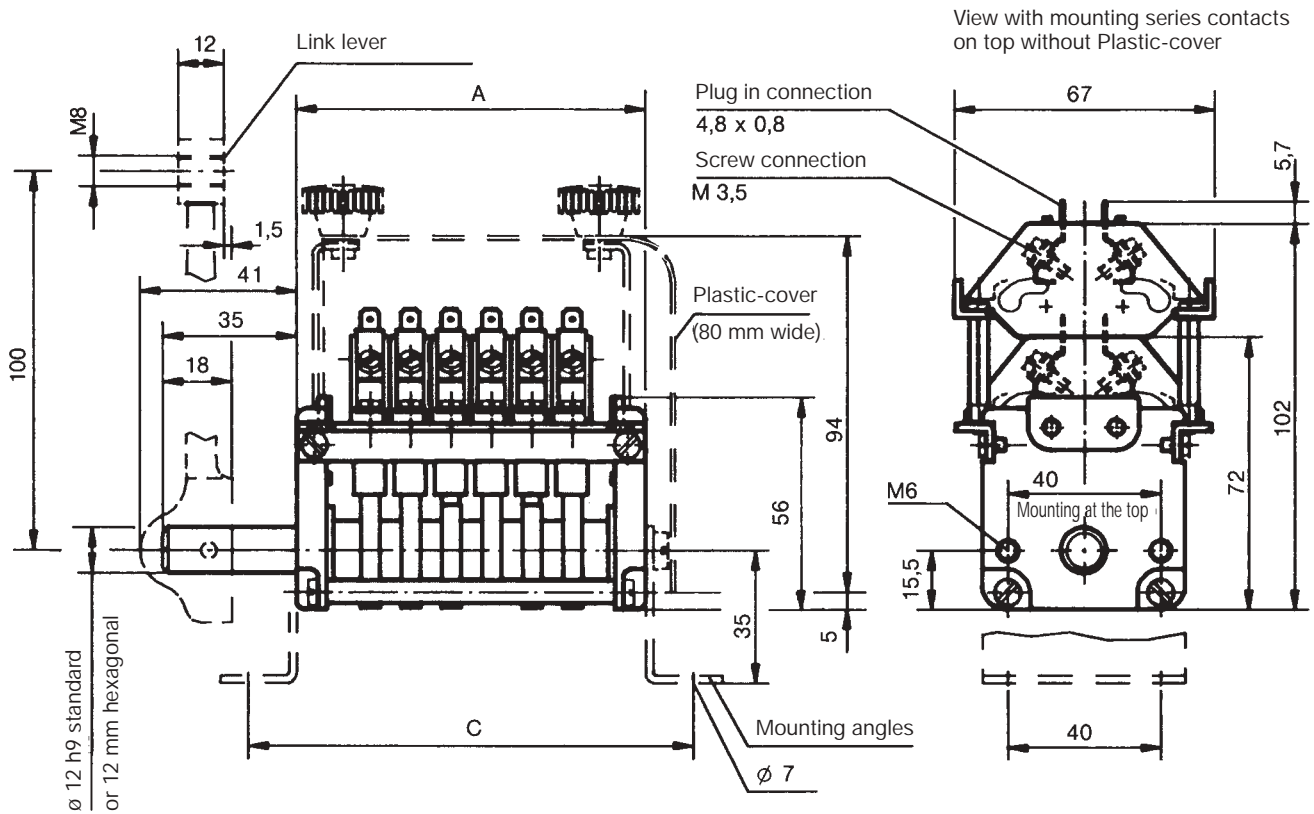
The cam controller NU 1 is used as a signal and announcement switch in HV systems. This rugged switching device to IEC 947-5-1 EN 60947  
DIN VDE 0660-200 and VDE 0670/4 § 20 has cam disks made of insulation material that can be set at 10° intervals.

**The switching rating of the contacts (NC with snap-action mechanism) is 6 A 250 V AC 15 or 2 A 250 V DC. Time constant L/R = 20 ms.**

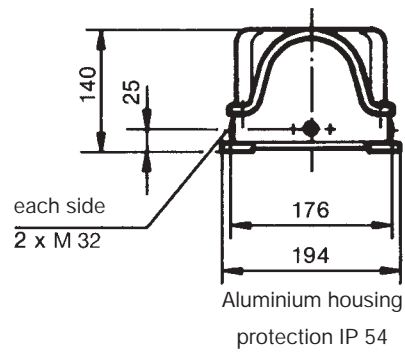
NO contacts can also be supplied. The DC contact blocks are designed to permit series assembly, which can then be operated simultaneously. This requires additional components for mounting the contacts.

Mechanical life	2 million operating cycles
Permissible ambient temperature	Operation -40° C to + 60° C Storage -50° C to + 80° C
Climate resistance	
Damp heat constant	DIN IEC 68 part 2-3
Damp heat cyclic	DIN IEC 68 part 2-30
Degree of protection (in housing)	IP 54 IEC 529 DIN 40050
Technical data	look catalog 5/100

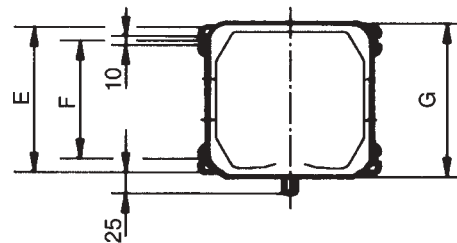
Pos.		Type	Weight gramm	Price EURO
1	Signal-cam controller	No of contact 2	2	350
2	with free shaftend 12 mm ø standard	4	4	460
3	or 12 mm hexagonal	6	6	570
4	Switching program	8	8	680
5		10	10	790
6		12	12	900
7		14	14	1010
8		16	16	1120
9		Switching program to your contact-arrangement	2	
10	Components for mounting series contacts on top	4	+4	110
11	with (DC-contacts)	8	+8	200
12		12	+12	290
13		16	+16	380
14				
15	Second free shaftend 12 mm ø standard or 12 mm hexagonal		F	
16	Spring return in 0-position		Z	110
17	Switching sequence 4-0-4			
18	Mounting angles 2 pieces each Signal-cam controller		W	80
19	Link lever for shaft 12 mm ø standard or 12 mm hexagonal		GH	70
21	Plastic-cover (Astralon)	up to max. 4	A	
22	(Dust and shock protection)	8	A	
23		12	A	
24		16	A	
25	Shock protection KEG 142 for DC-contacts to DIN VDE 0106 Part 100			
30	Aluminium housing U 15 / 14 up to Type 6		U	1700
31	Aluminium housing U 15 / 21 up to Type 12		U	2300
32	Aluminium housing U 15 / 30 up to Type 16		U	2900



Type	No. of contact	Dimension A	Dimension C
02	2	49,0	74,0
04	4	70,2	95,2
06	6	91,4	116,4
08	8	112,6	137,6
10	10	133,8	158,8
12	12	155,0	180,0
14	14	176,2	201,2
16	16	197,4	222,4



U 15 / ..	Dimension E	Dimension F	Dimension G
/14	160	130	169
/21	230	200	239
/30	320	290	329



Example for Type-sign  
Signal-cam controller  
No. of contacts  
Plastic-cover



Special please to describe  
Link rod  
Mounting angles